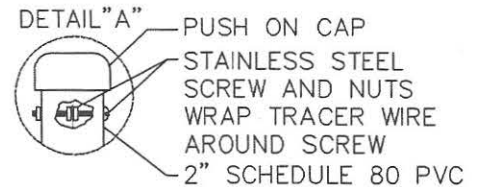


DOUBLE CHECK DETECTOR ASSEMBLY (DCDA) TO BE USED ON FIRE SYSTEMS ONLY WITH NO TANKS, ADDITIVES OR ANOTHER WATER SOURCE

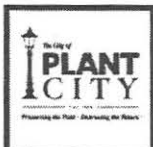
MATERIALS		
ITEM	QTY.	DESCRIPTION
1	1	DCDA BACKFLOW PREVENTION ASSEMBLY WITH METER
2	2	GATE VALVE (OS & Y)
3	2	90 DEGREE ELBOW, DIP-FLANGE TO FLANGE
4	2	RISERS, DIP-C51 FLANGE TO FLANGE
5	4	MEGALUG RETAINER GLANDS
6	2	90 DEGREE ELBOW, DIP - FLANGE TO MJ
7	2	ADJUSTABLE PIPE SUPPORTS
8	*	4" CONCRETE SLAB
9	1	PIPE TRACER WIRE ASSEMBLY (SEE DETAIL A)



NOTES:

- ORDER TO FIT ITEM #4 TO PROPER LENGTH.
- ALL FITTINGS ABOVE GROUND SHALL BE FLANGED INCLUDING THE RISERS.
- ALL PIPE SUPPORTS SHALL BE ADJUSTABLE.
- CONCRETE SLAB SHALL BE 4" THICK AND EXTEND 12" MINIMUM AROUND ENTIRE INSTALLATION.
- SEE CITY OF PLANT CITY LIST OF APPROVED BACKFLOW PREVENTION ASSEMBLIES.
- BOLLARDS AS REQUIRED IN HIGH TRAFFIC AREAS, PAINTED OSHA SAFETY YELLOW.
- ALL PIPING AND VALVES SHALL BE PAINTED FIRE SAFETY RED.

City of Plant City
1802 Spooner Drive
Plant City, FL 33563
Phone: (813) 757-9288



LOW HAZARD DOUBLE DETECTOR CHECK BACKFLOW ASSEMBLY 3" TO 10" WATER SERVICE FOR FIRE SYSTEMS

ORIGINAL DRAWING 10/03/2017

SCALE: NTS

DRAWING NO.

WS-17

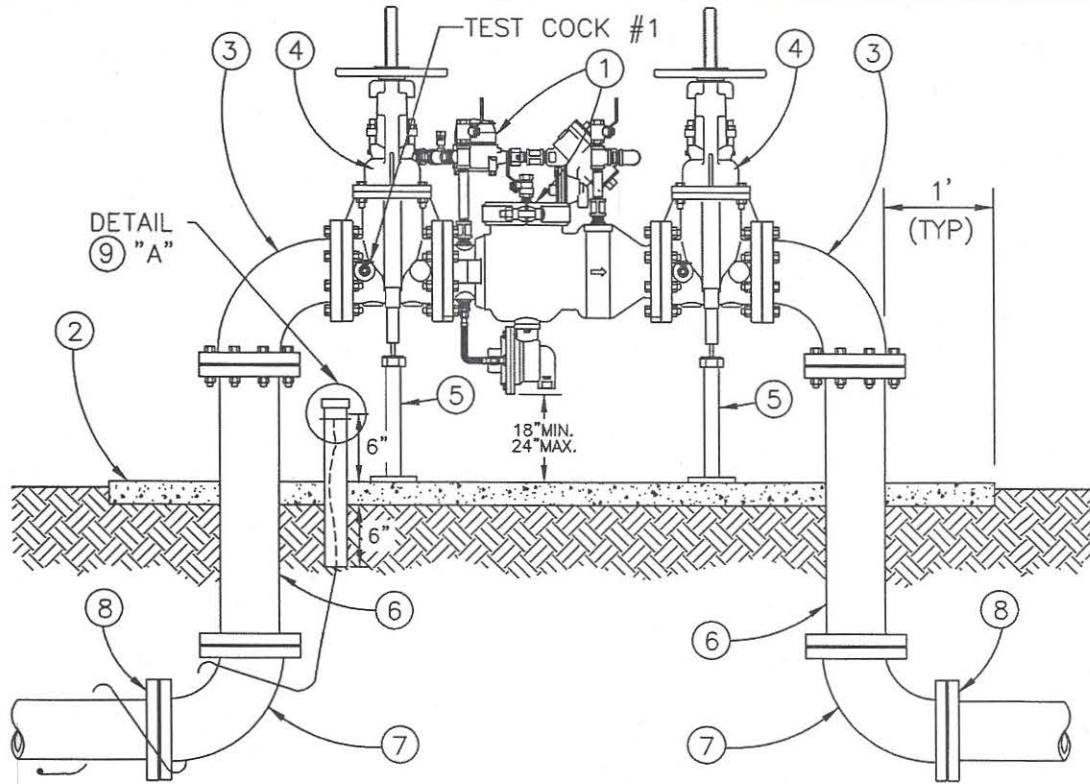
REVISION DATE

PAGE NO.

REVISION DATE

21

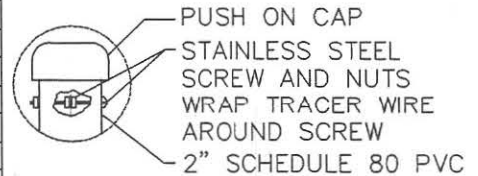
REVISION DATE



REDUCE PRESSURE DETECTOR ASSEMBLY (RPDA) TO BE USED ON FIRE SYSTEMS ONLY WITH TANKS, ADDITIVES OR CONNECTIONS TO ANOTHER WATER SOURCE.

MATERIALS		
ITEM	QTY.	DESCRIPTION
1	1	RPDA BACKFLOW PREVENTION ASSEMBLY WITH METER
2	2	4" CONCRETE SLAB
3	2	90 DEGREE ELBOW, DIP-FLANGE TO FLANGE
4	2	(GATE VALVE, C.I. (OS&Y)
5	2	ADJUSTABLE PIPE SUPPORTS
6	2	RISERS, DIP-C51 FLANGE TO FLANGE
7	2	90 DEGREE ELBOW, DIP - FLANGE TO MJ
8	2	MEGALUG RETAINER GLANDS
9	1	PIPE TRACER WIRE ASSEMBLY - SEE DETAIL "A"

DETAIL "A"



NOTES:

- ORDER TO FIT #6 TO THE PROPER LENGTH.
- CONCRETE SLAB SHALL BE 4" THICK AND EXTEND 12" MINIMUM AROUND ENTIRE INSTALLATION.
- ALL FITTINGS ABOVE GROUND INCLUDING RISER TO BE FLANGED.
- PIPE, FITTINGS AND VALVES TO BE PAINTED SAFETY RED.
- SEE CITY OF PLANT CITY LIST OF APPROVED BACKFLOW PREVENTION ASSEMBLIES.
- BOLLARDS AS REQUIRED IN HIGH TRAFFIC AREAS, PAINTED OSHA SAFETY YELLOW.

City of Plant City
1802 Spooner Drive
Plant City, FL 33563
Phone: (813) 757-9288



HIGH HAZARD BACKFLOW ASSEMBLY 3" TO 10" WATER SERVICE FOR FIRE SYSTEMS

ORIGINAL DRAWING 10/03/2017

SCALE: NTS

DRAWING NO.

WS-18

REVISION DATE

PAGE NO.

REVISION DATE

22

REVISION DATE